

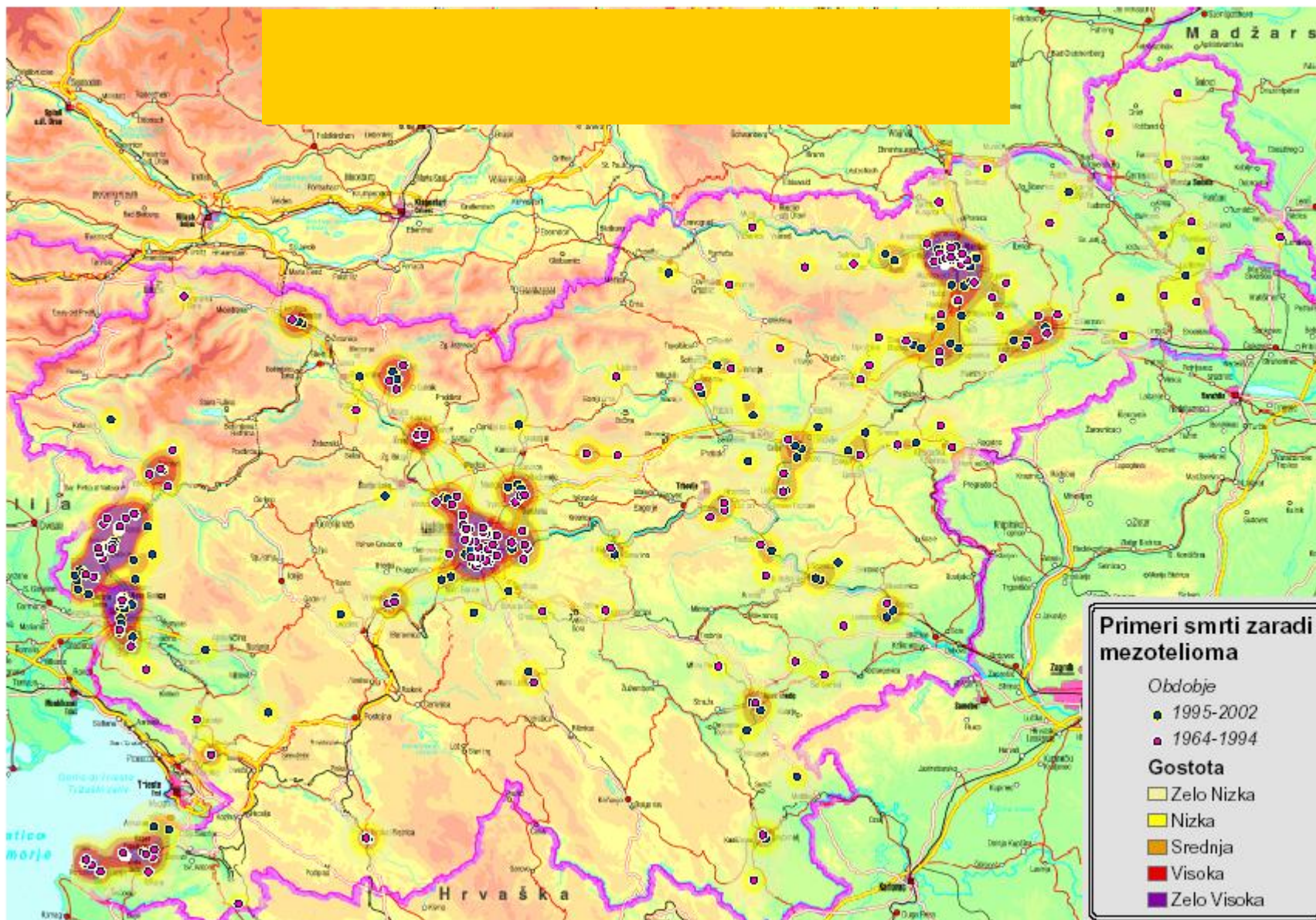
Kritični pogled na analizo zdravja kot prvo fazo načrtovanja

Prof. dr. Metoda Dodič Fikfak

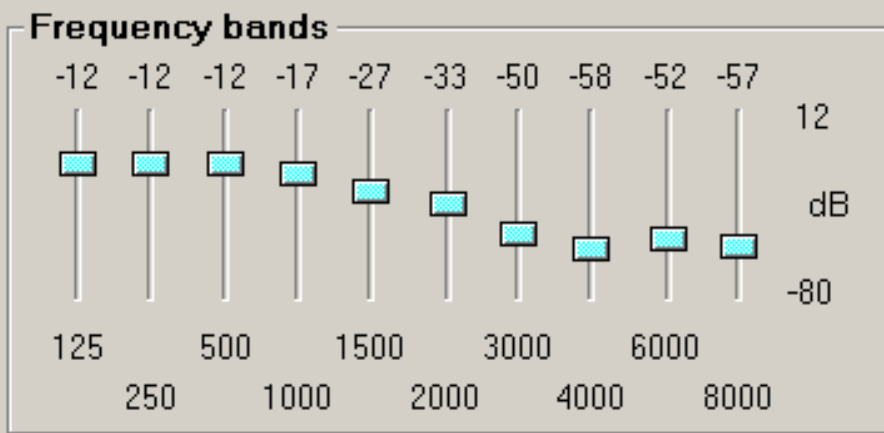
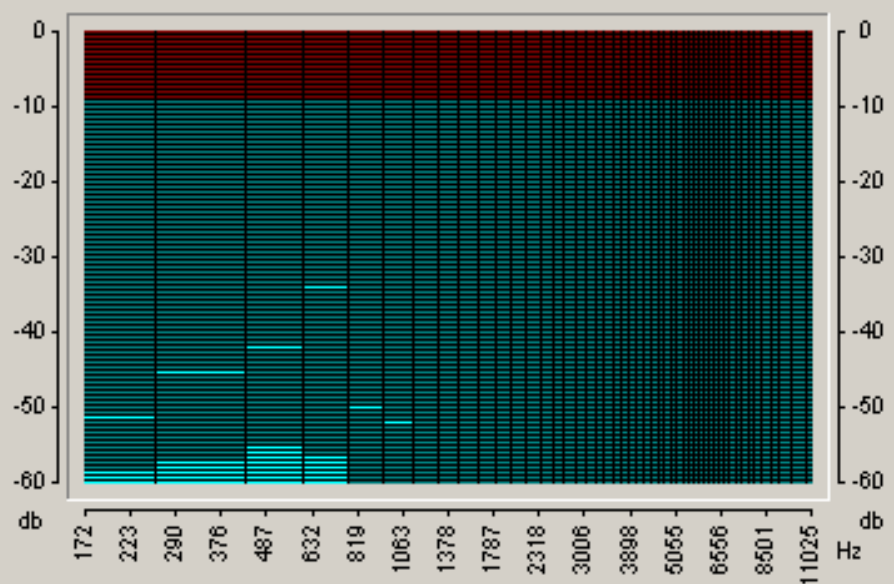


Klinični center Ljubljana
Klinični inštitut za medicino dela, prometa in športa
www.cilizadelo.si

 Projekt sofinancira Evropska unija



Main | Set Speech and Noise Source | Record



Hearing Loss

- No Loss
- Exposure Predicted
- Mild Generic
- Moderate generic
- Mod/Severe Generic
- Manual
- Compensate for Loss

Hearing Loss Status

Exposure Predicted
 Gender: Male
 Age: 58
 Years Exposure: 40
 Exposure Level: 100 dB
 Fractile: .5
 Compensated: No

Exposure Predicted

- Include Age Effects
- Male Female

Age: **58**

- Include Effects of Noise Exposure

Years of Exposure: **40**

Exposure Level (dBA): **100**

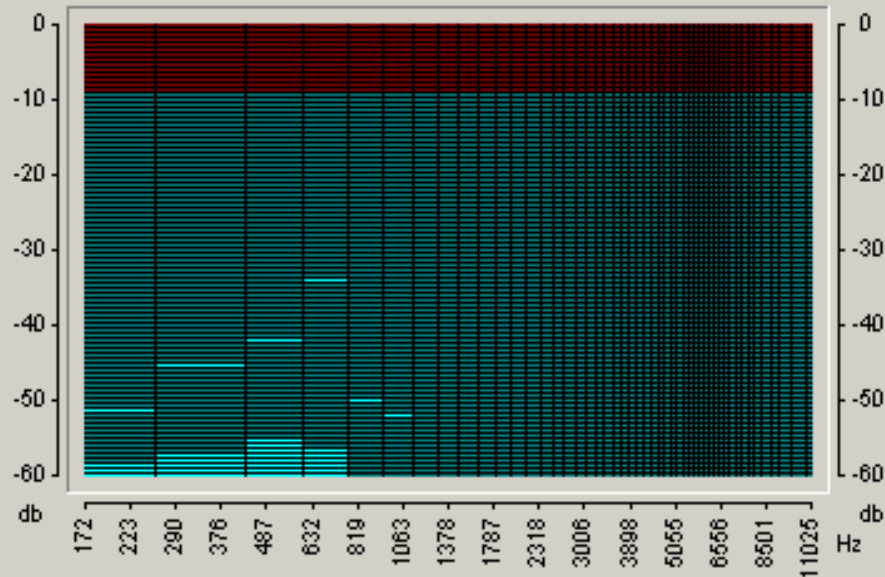
Fractile = 0.5

Default Values

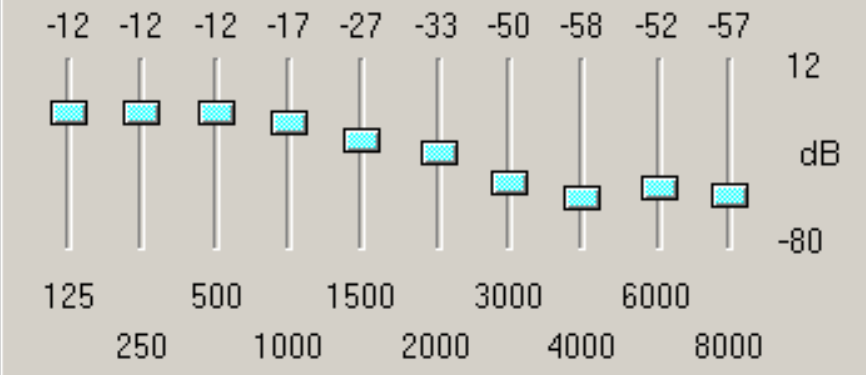
Hearing Loss Simulator

- Exit
- Stop [F2]
- About
- Help
- NIOSH Mining Web
- Pause [F3]

Main | Set Speech and Noise Source | Record



Frequency bands



Hearing Loss

- No Loss
- Exposure Predicted
- Mild Generic
- Moderate generic
- Mod/Severe Generic
- Manual
- Compensate for Loss

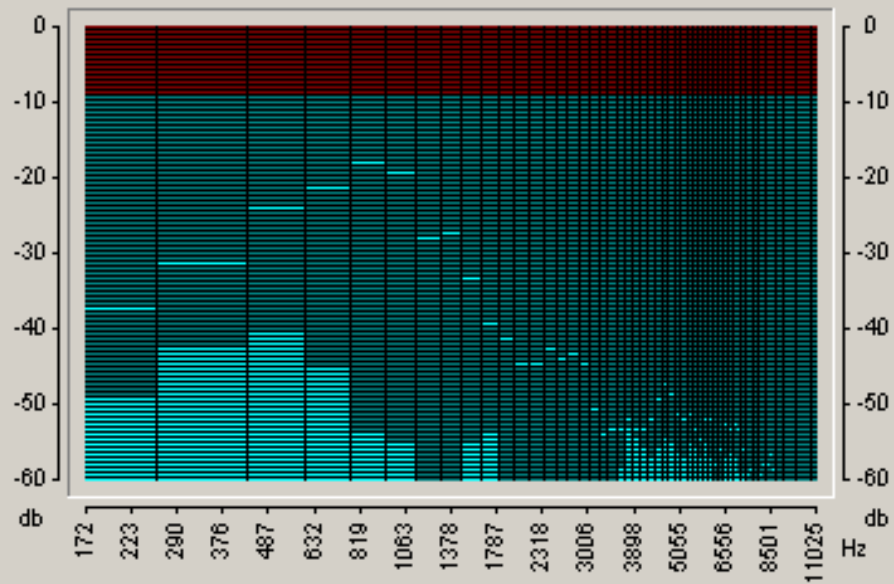
Hearing Loss Status

Exposure Predicted
Gender: Male
Age: 58
Years Exposure: 40
Exposure Level: 100 dB
Fractile: .5
Compensated: No

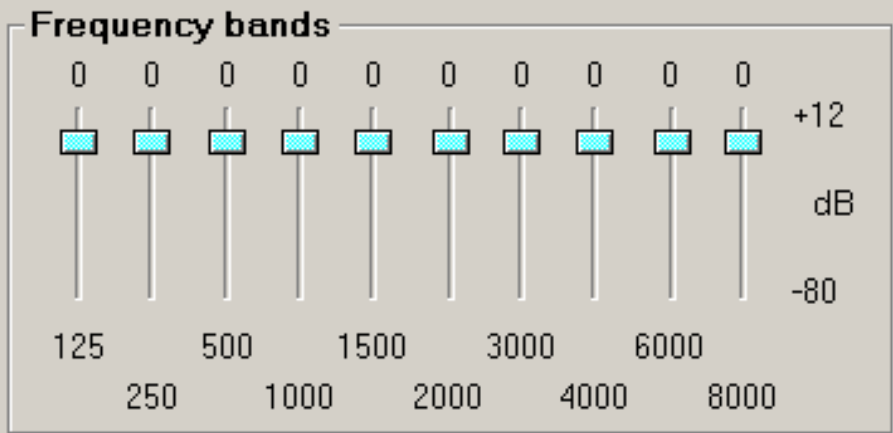
Exposure Predicted

- Include Age Effects
- Male Female
- Age: **58**
- Include Effects of Noise Exposure
- Years of Exposure: **40**
- Exposure Level (dBA): **100**
- Fractile = 0.5
- Default Values

Main Set Speech and Noise Source Record



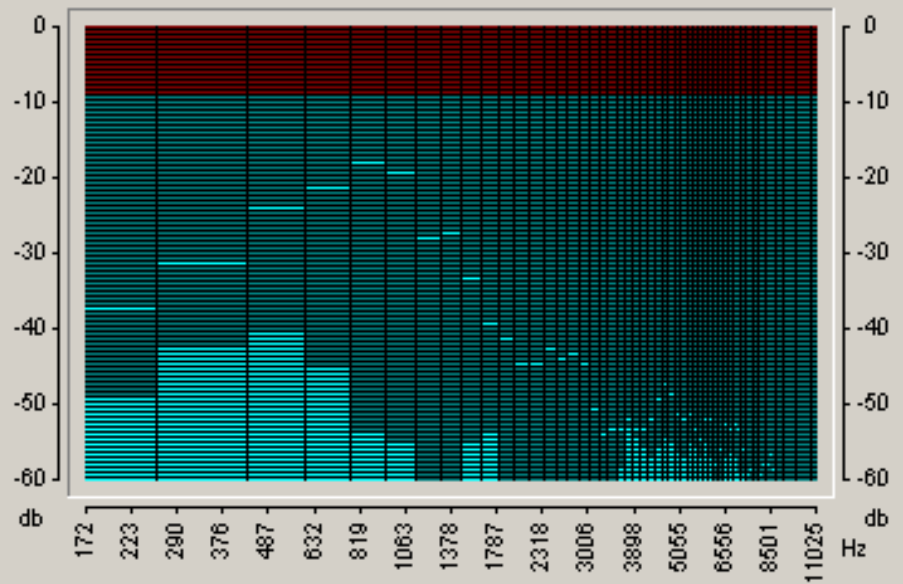
- ### Hearing Loss
- No Loss
 - Exposure Predicted
 - Mild Generic
 - Moderate generic
 - Mod/Severe Generic
 - Manual
 - Compensate for Loss



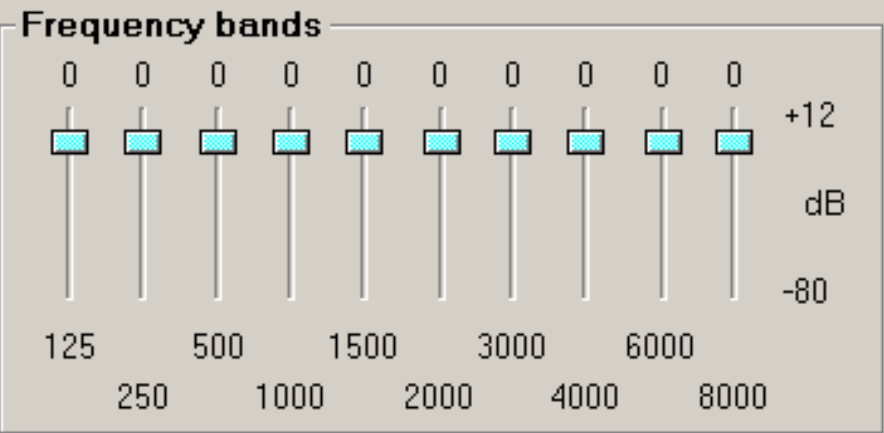
Hearing Loss Status

No Loss
Compensated: No

Main Set Speech and Noise Source Record



- ### Hearing Loss
- No Loss
 - Exposure Predicted
 - Mild Generic
 - Moderate generic
 - Mod/Severe Generic
 - Manual
 - Compensate for Loss

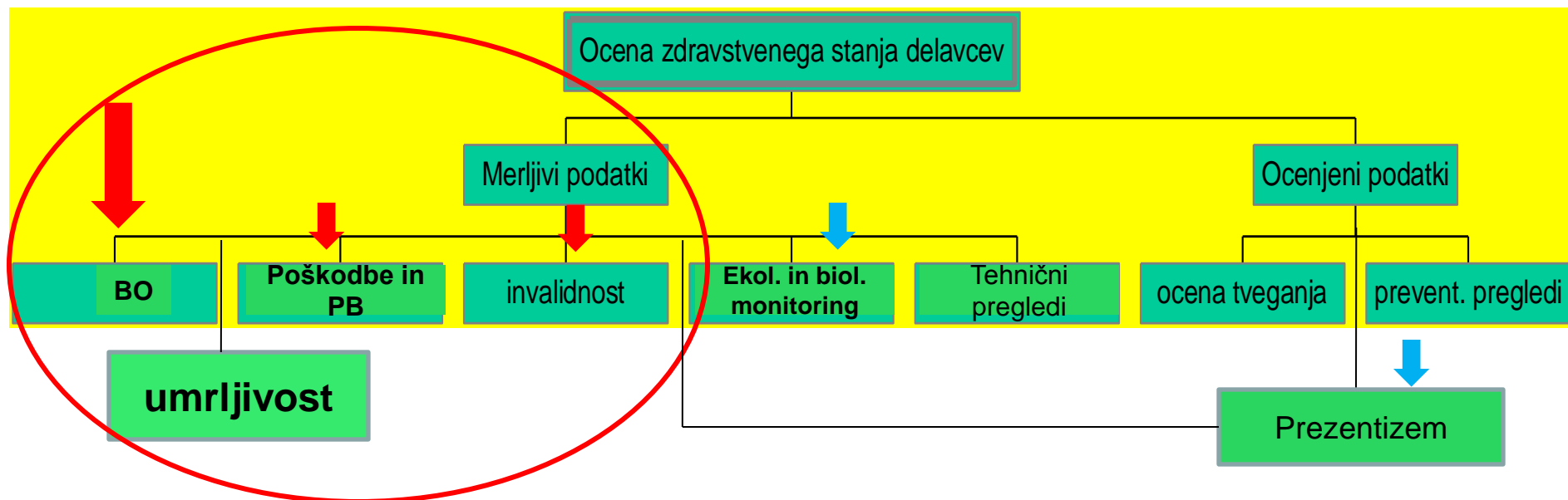


Hearing Loss Status

No Loss
Compensated: No

Analiza zdravja delavcev

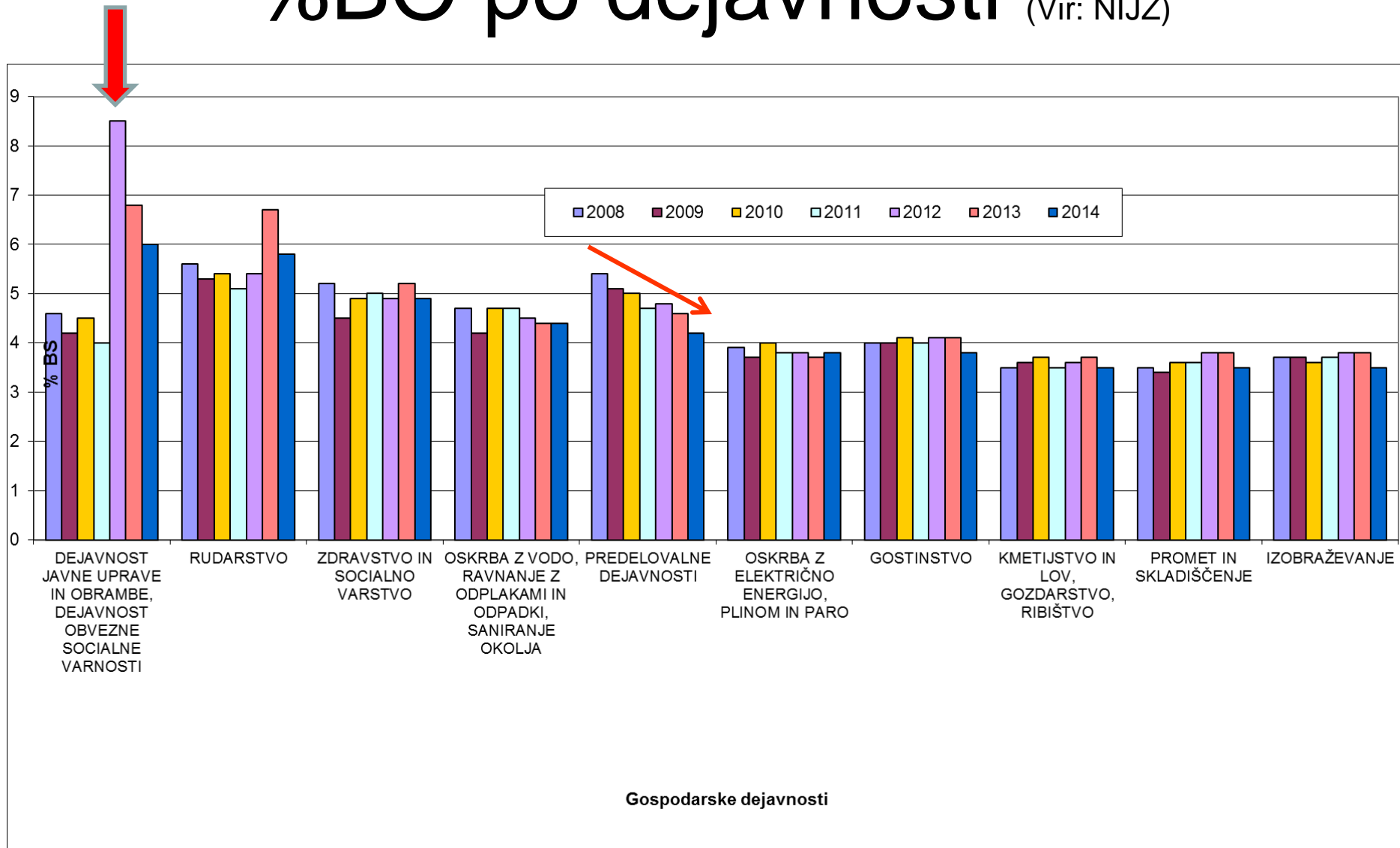
Kazalniki



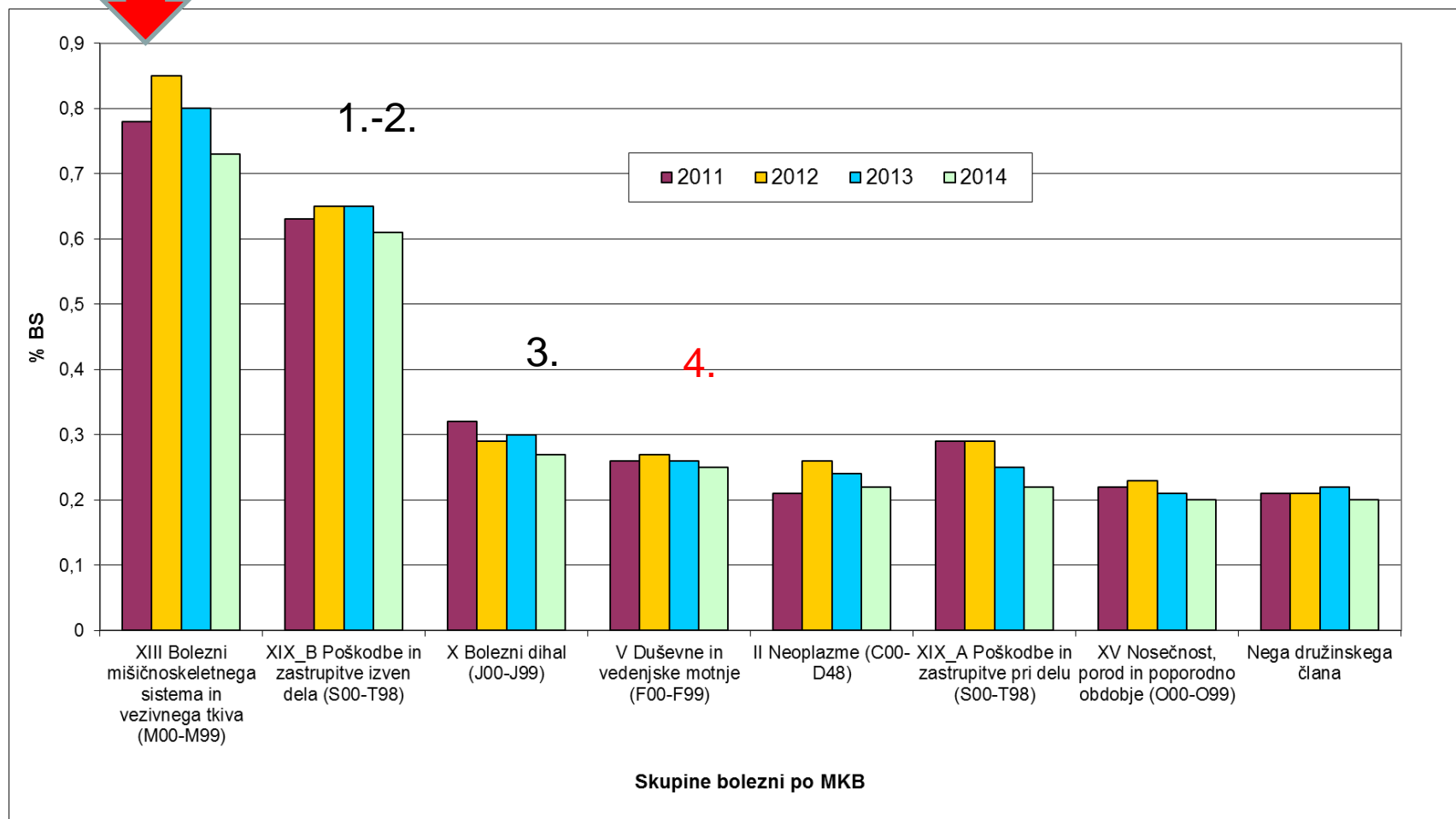
Velikost opazovane populacije



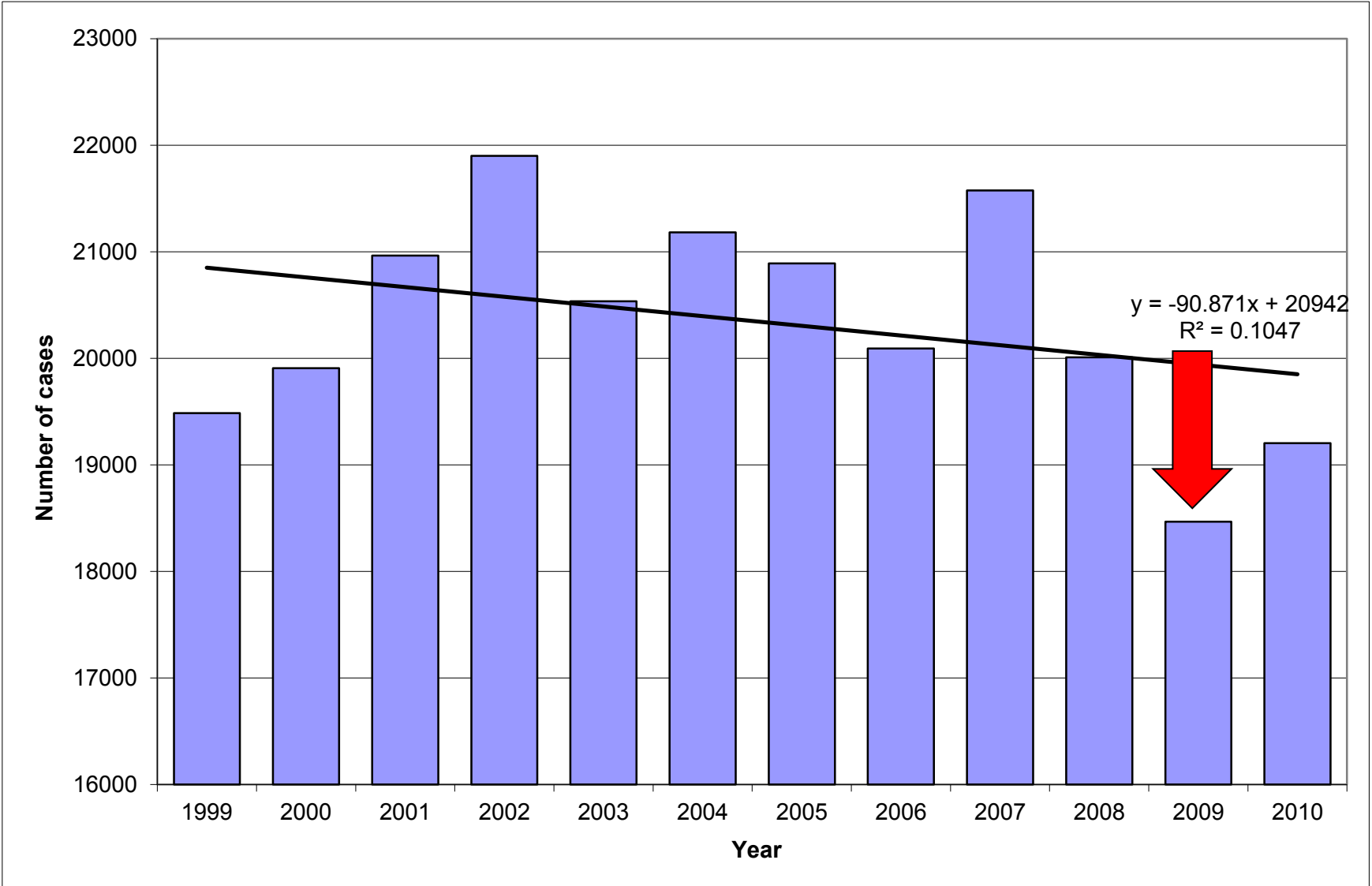
%BO po dejavnosti (Vir: NIJZ)



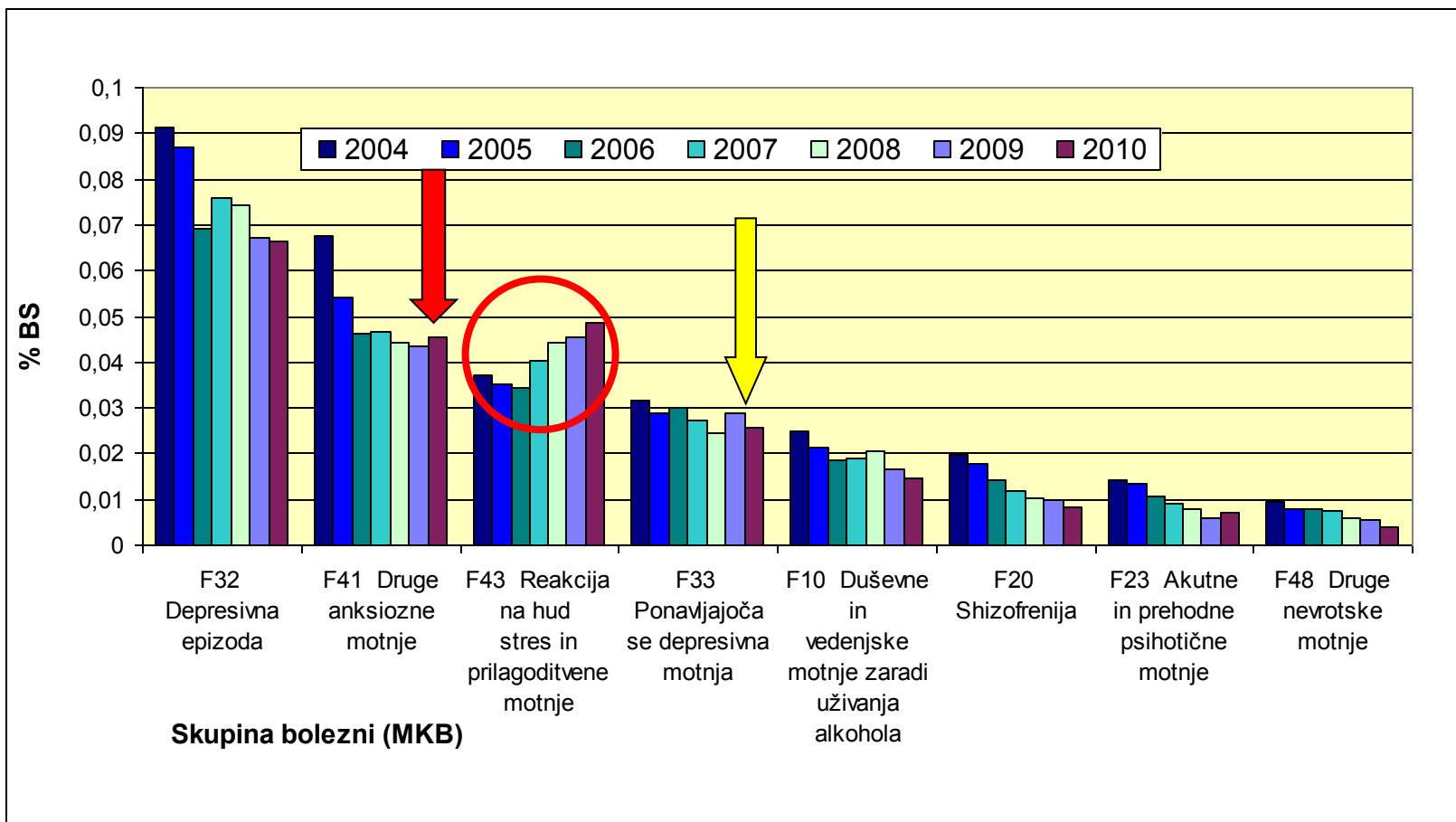
%BO po diagnozah



BO, število primerov, DVM, 1999-2010 (vir: IVZ)

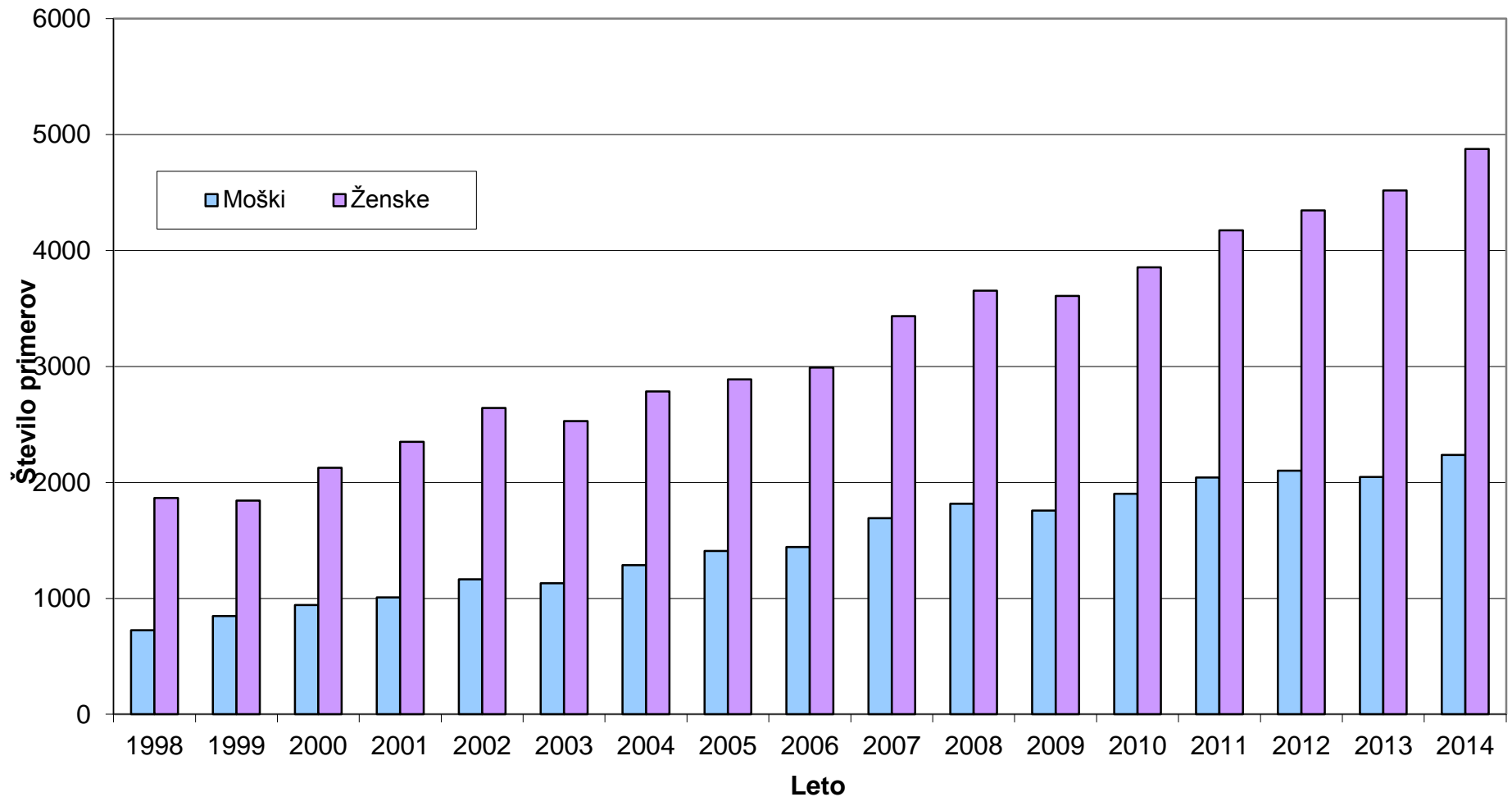


% BS, DVM po diagnozi, 2004- 2010_(vir: IVZ)



Št. primerov, reakcija na hud stres, 1998-2014

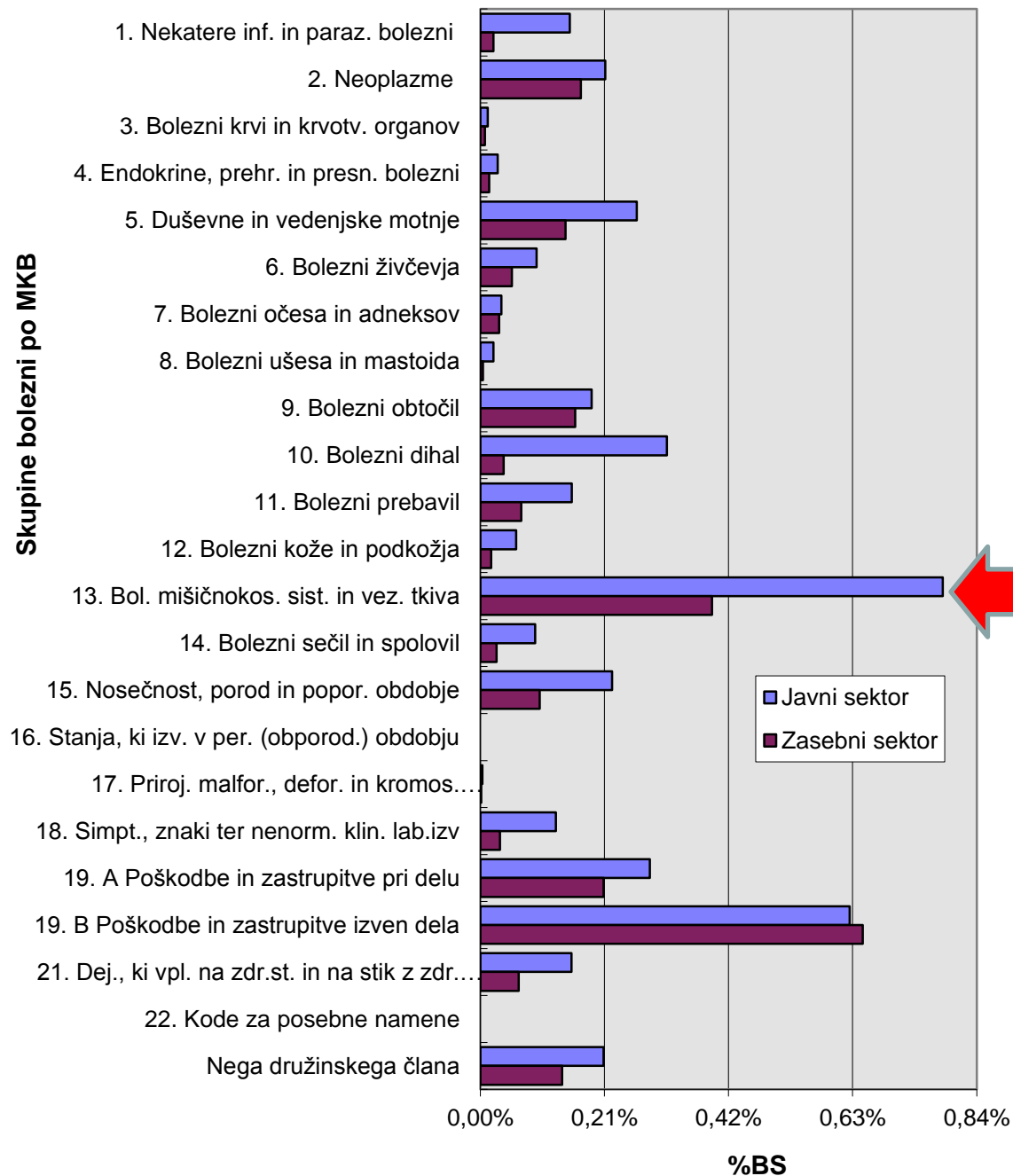
F43 Reakcija na hud stres in prilagoditvene motnje



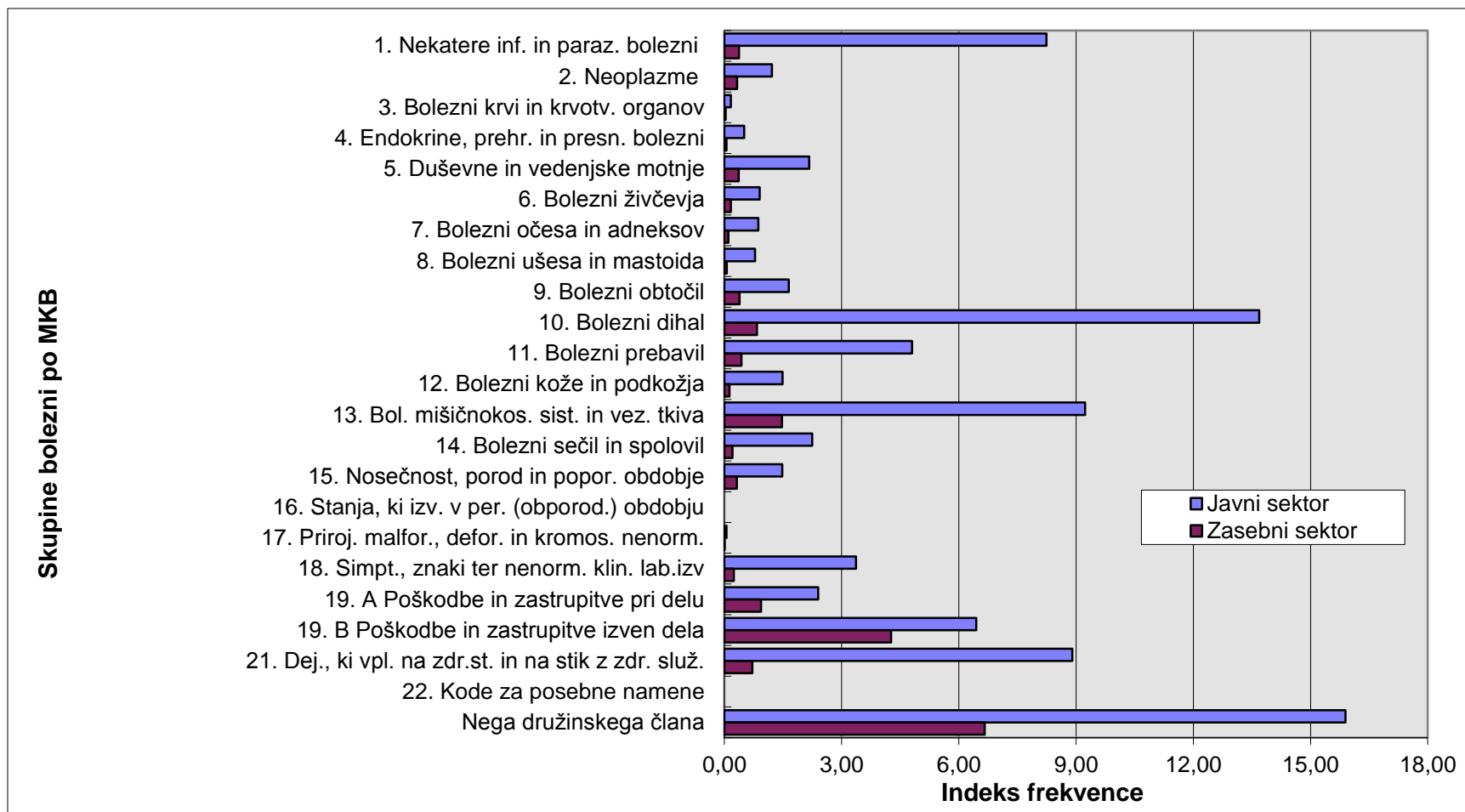
% BS, Javni – Zasebni po sk. boleznih, 2011

(vir: IVZ)

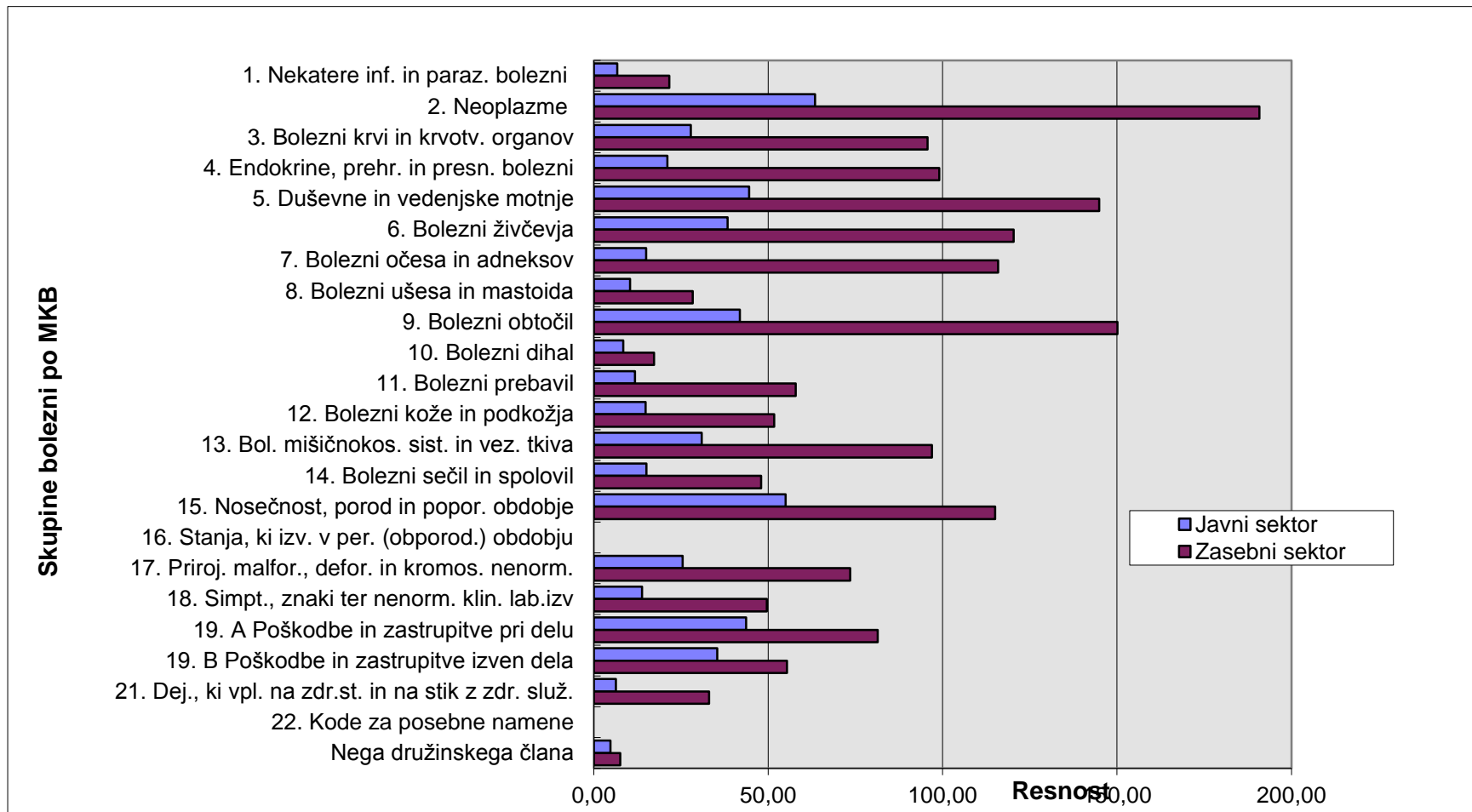
Skupine boleznih po MKB



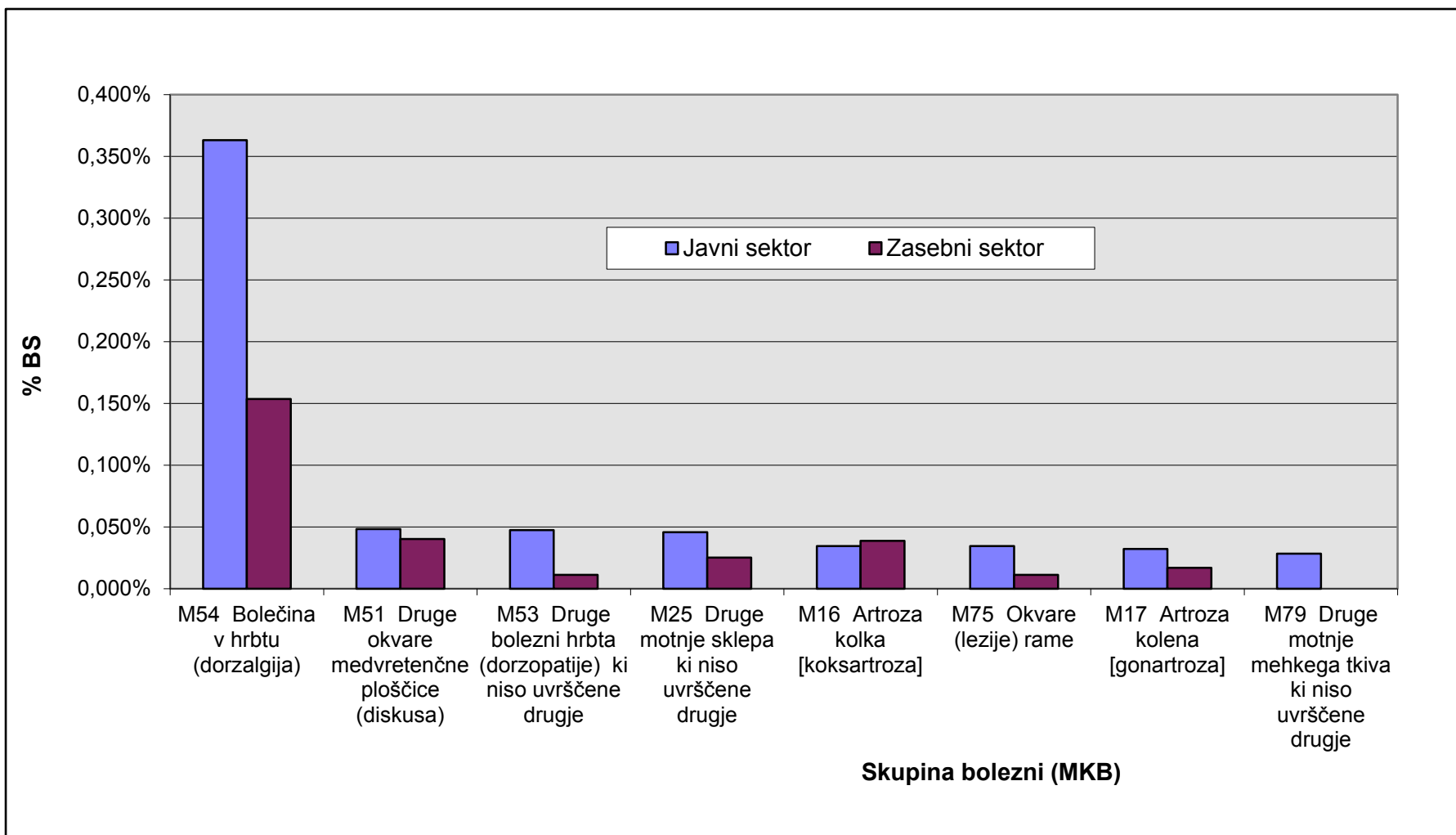
IF po skupinah bolezni, 2011, (vir: IVZ)



R po skupinah bolezni, 2011, (vir: IVZ)

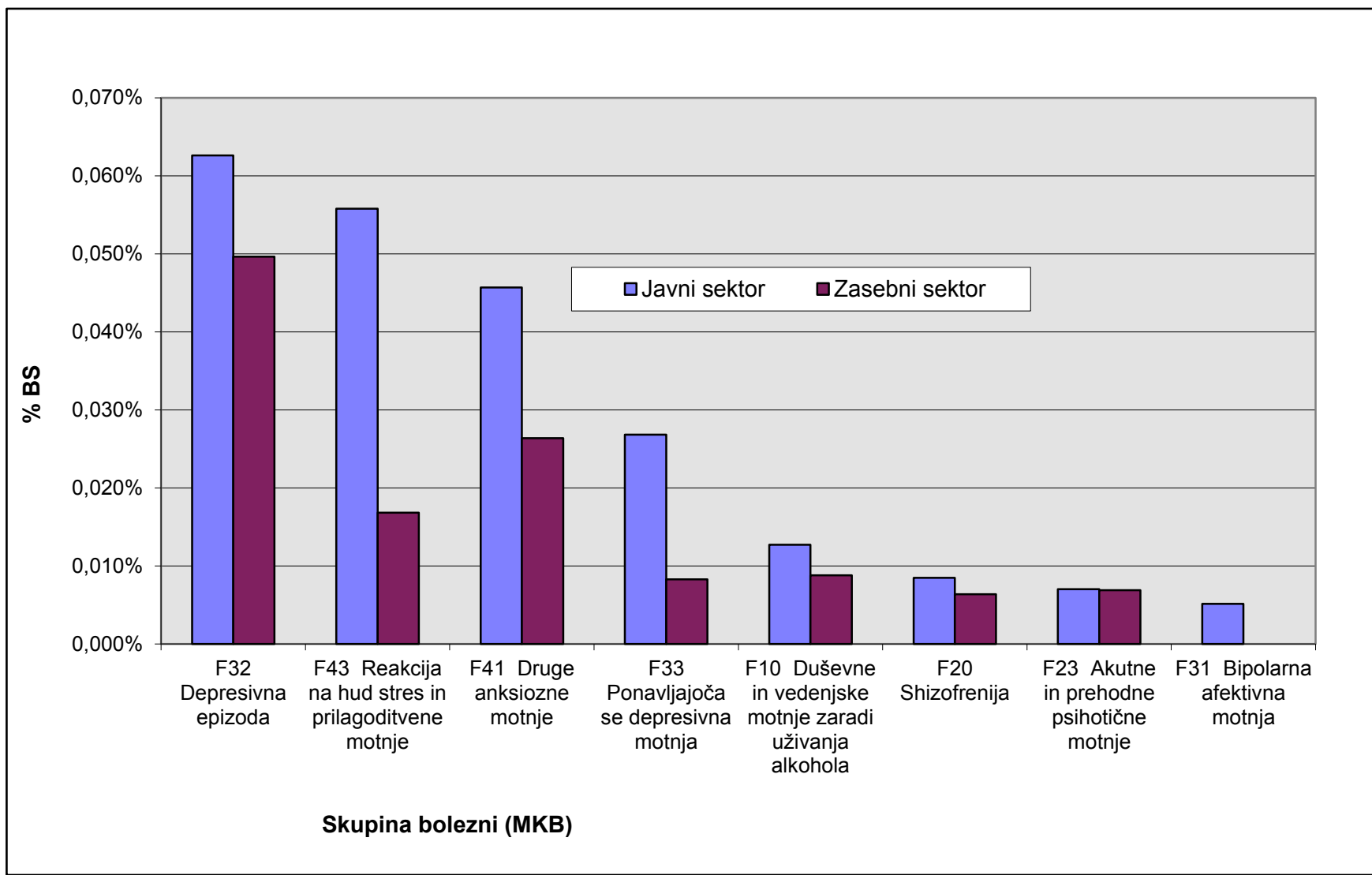


%BO, KMB, javni/zasebni, 2011, (vir: IVZ)



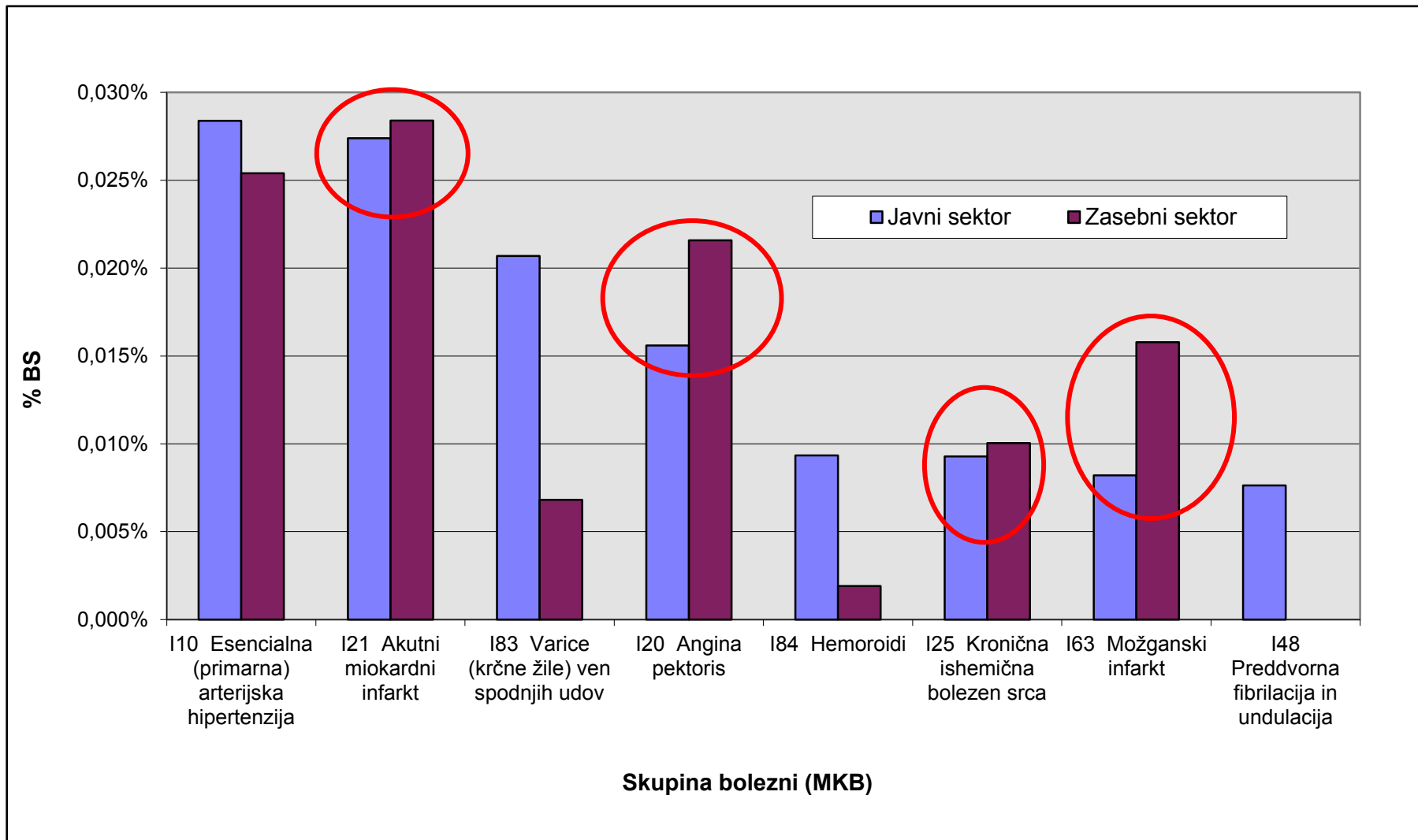
%BO,DVM, javni/zasebni, 2011

(vir: IVZ)

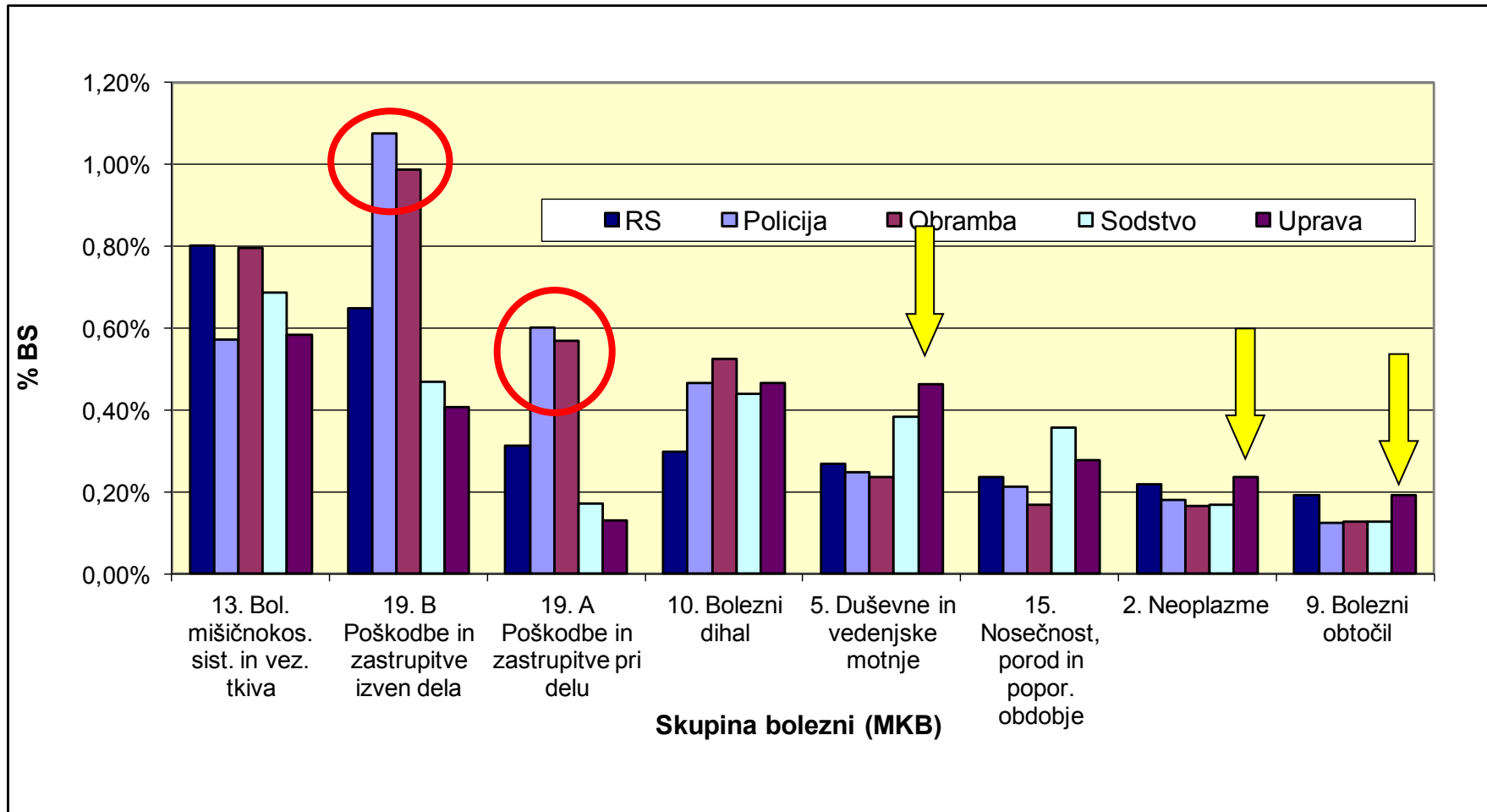


%BO, KVB, javni/zasebni, 2011,

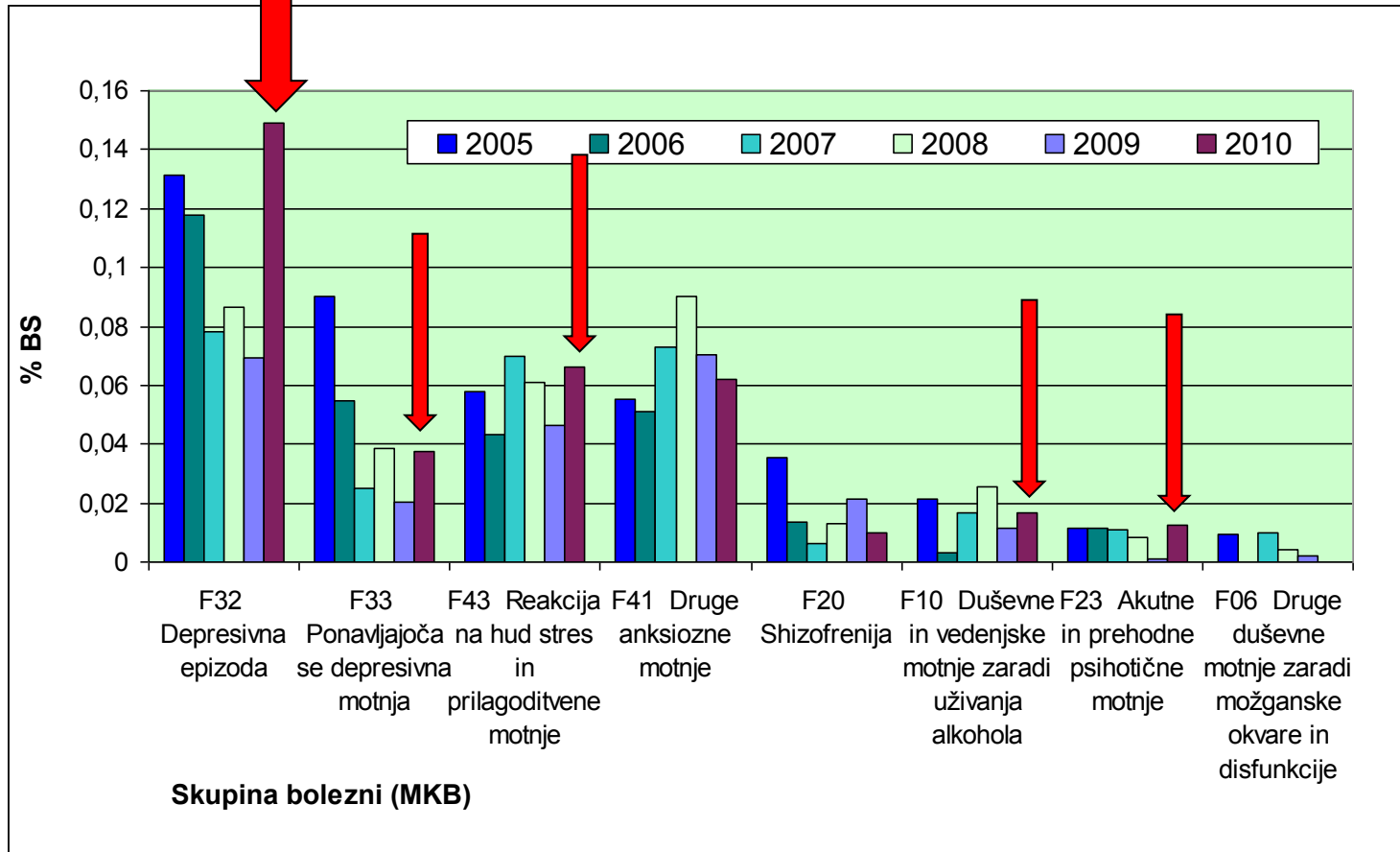
(vir: IVZ)



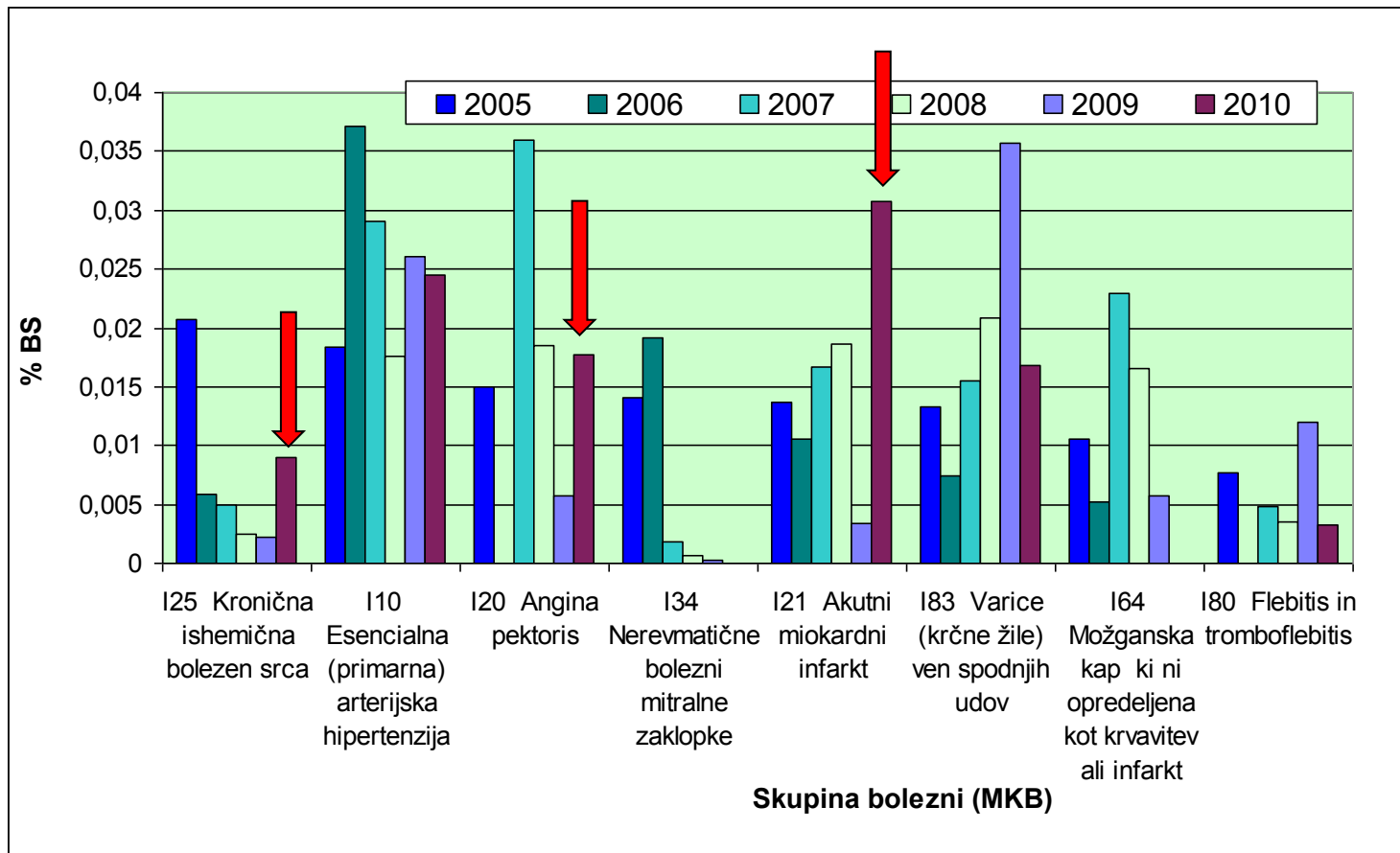
%BO po diagnozah in panogah 2010



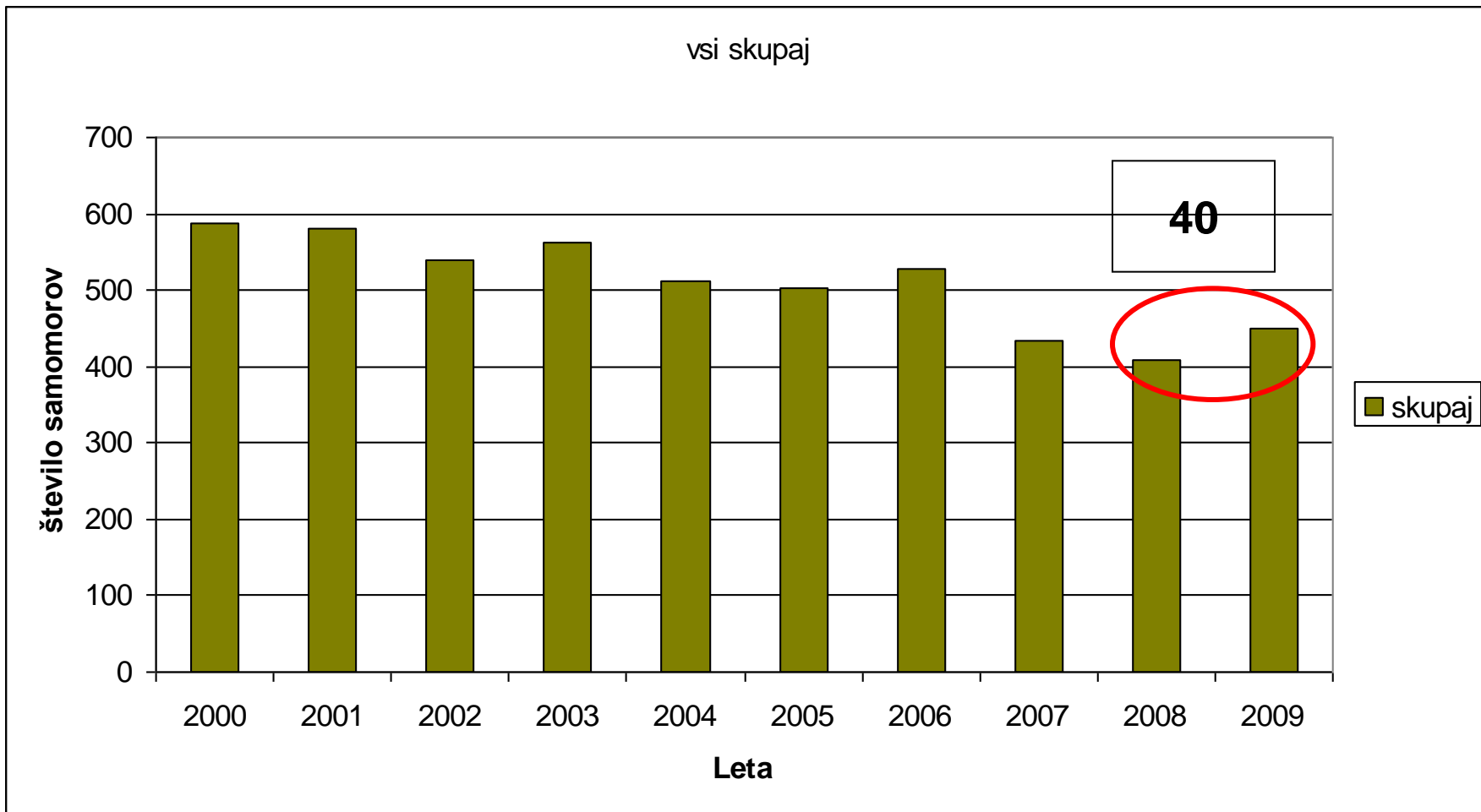
%BS, DVM, javna uprava, 2005-2010



%BS, KVS, javna uprava, 2005-2010



Število samomorov v SI, 2000-2009 (vir: IVZ)

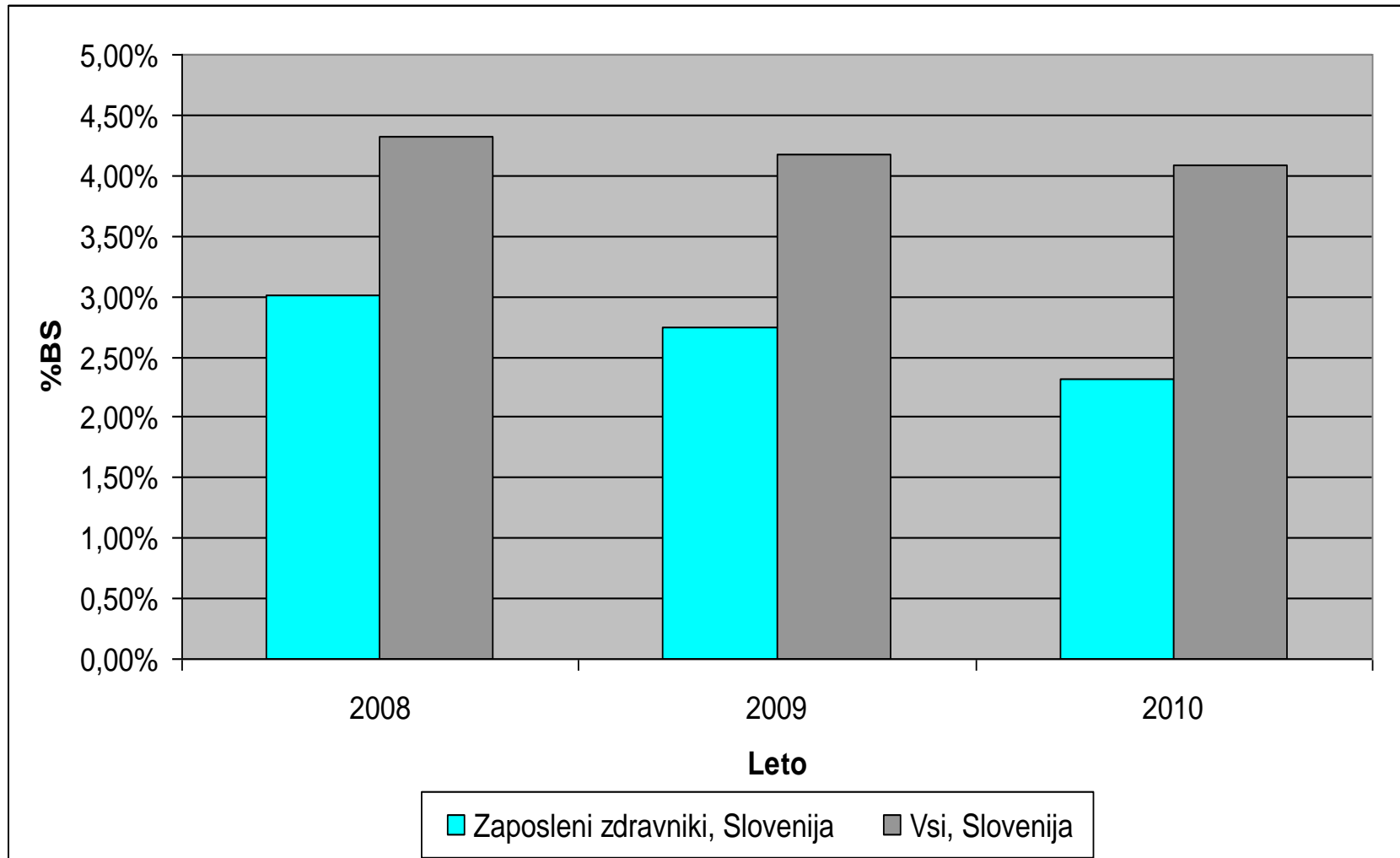


% BO, bolnišnica, po profilih

(Vir: NIJZ RS)

leto	vsi	zdrav	nega	ostali	nezdr
2005	5,3	2,7	5,7	4,3	6,4
2006	4,8	2,5	5,4	3,4	5,9
2007	5,3	2,5	5,5	4,2	6,9
2008	5,3	2,5	5,6	4,5	6,9

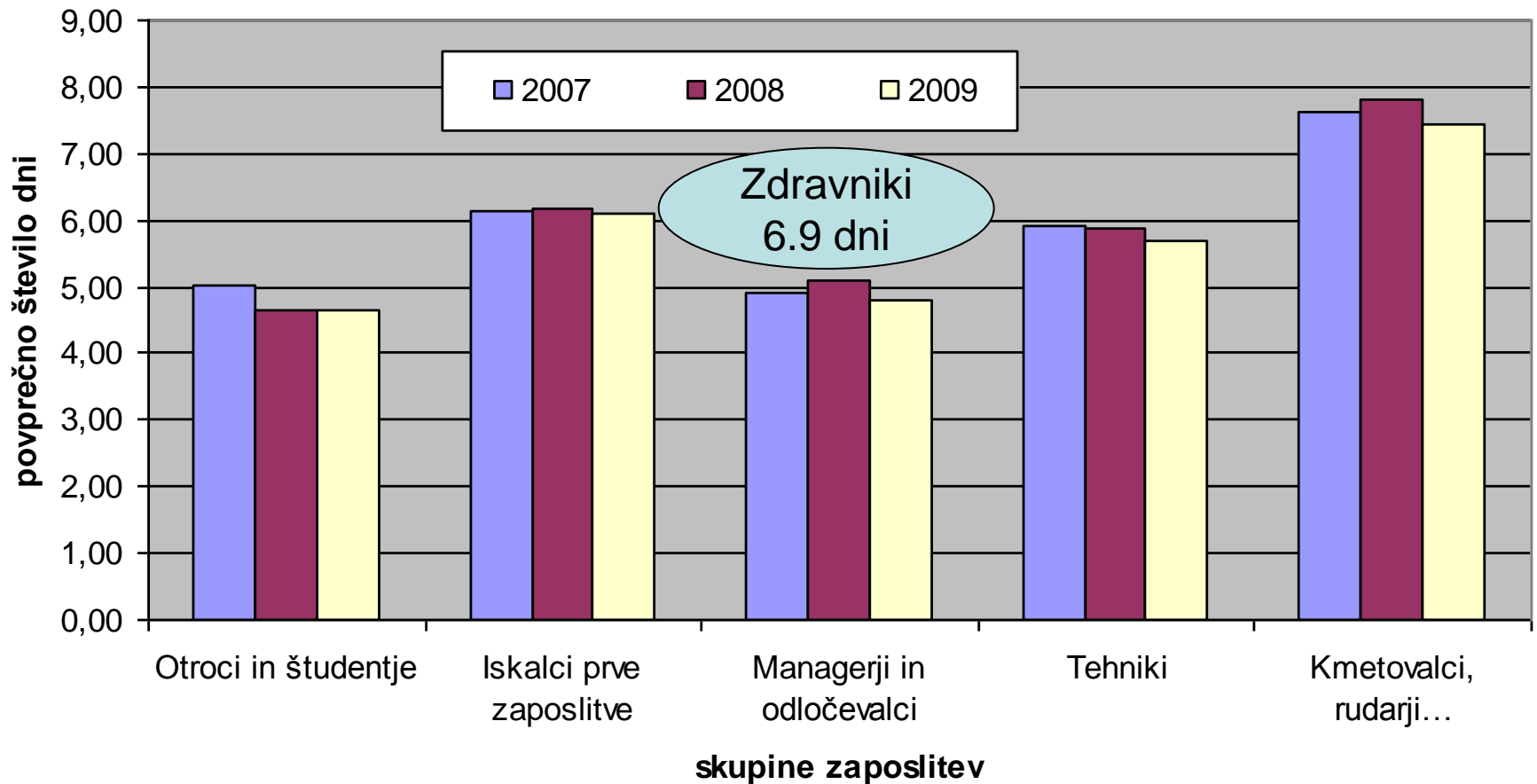
Odstotek BO, zdravniki/vsi v RS, 2008-2010 *(Vir: IVZ RS)*



Število bolnišničnih obravnav %, zdravniki/vsi, 2009 (Vir: NIJZ RS)

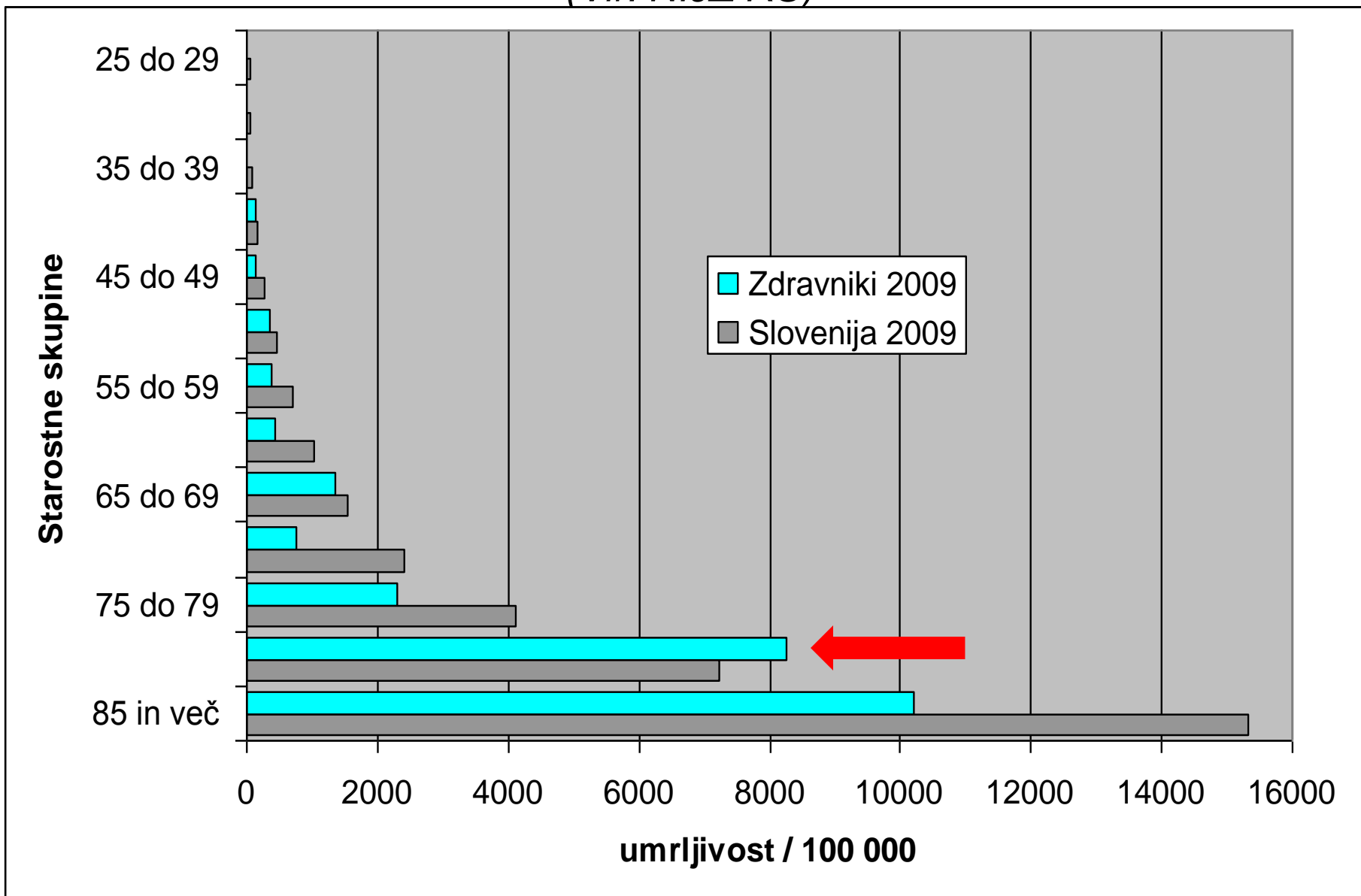
DG	VSI	Zdrav.
Neoplazme	12.8	10.0
KVS	14.5	11.6
Dihala	10.3	5.4
Prebavila	10.4	9.7

Povprečno trajanje hospitalizacije 2007 - 2009 (skupaj) (Vir: NIJZ)

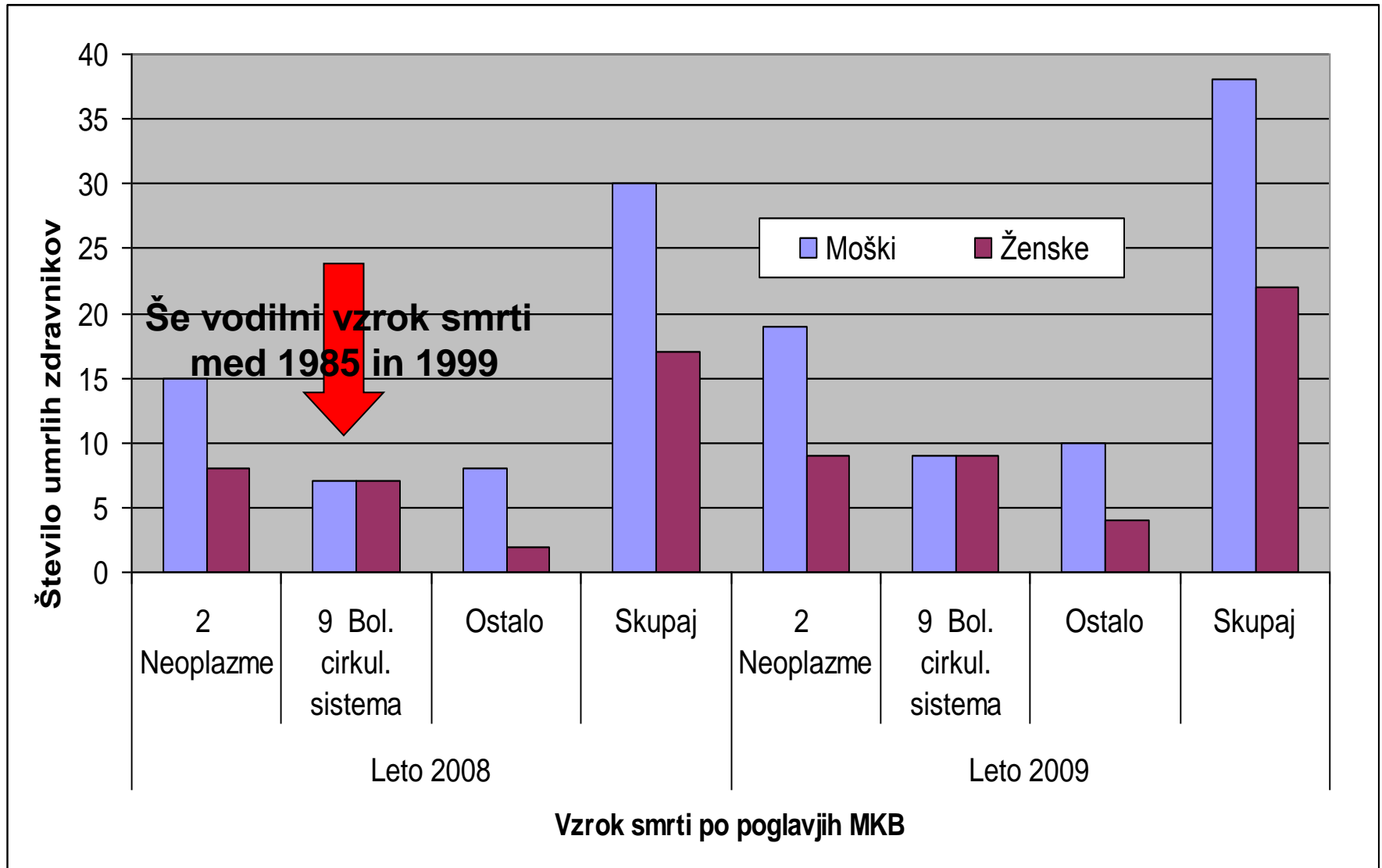


Umrljivost, zdravniki/vsi, 2009

(Vir: NIJZ RS)



Umrli zdravniki po vzroku in spolu v RS, 2008, 2009 *(Vir: IVZ RS)*



NEVARNOST



BO 3.5%
Mala števila

Primer

- 70 zaposlenih:

– %BO:	M	Ž
2011	1.32	
2012	2.31	
2013	1,85	
2014	.95	
2015	.80	

NIHANJE JE UMETNO; GRE NA RAČUN
POSAMEZNIKOV – MALIH ŠTEVIL

NASVET

Ko imate mala števila VEDNO pogledjte rezultate v absolutnih številkah!

Hanna Schygulla



Kolo z lastovkami



Veronika z raco





Portret pripognjenega avtorja



Hoteti

Verjeti

Biti vztrajen

HVALA



Klinični center Ljubljana
Klinični inštitut za medicino dela, prometa in športa
www.cilizadelo.si

■ Projekt sofinancira Evropska unija